

# EMERALD LAKES PHASE VIII

BEING A REPLAT OF A PORTION OF EMERALD LAKES AS RECORDED  
IN PLAT BOOK 9, PAGE 22 OF THE PUBLIC RECORDS OF MARTIN

COUNTY, FLORIDA.

SECTION 25, TOWNSHIP 38 SOUTH, RANGE 41 EAST  
SHEET 2 of 2 JULY 1988

NEW MONROVIA  
P.B. 1, PG. 73

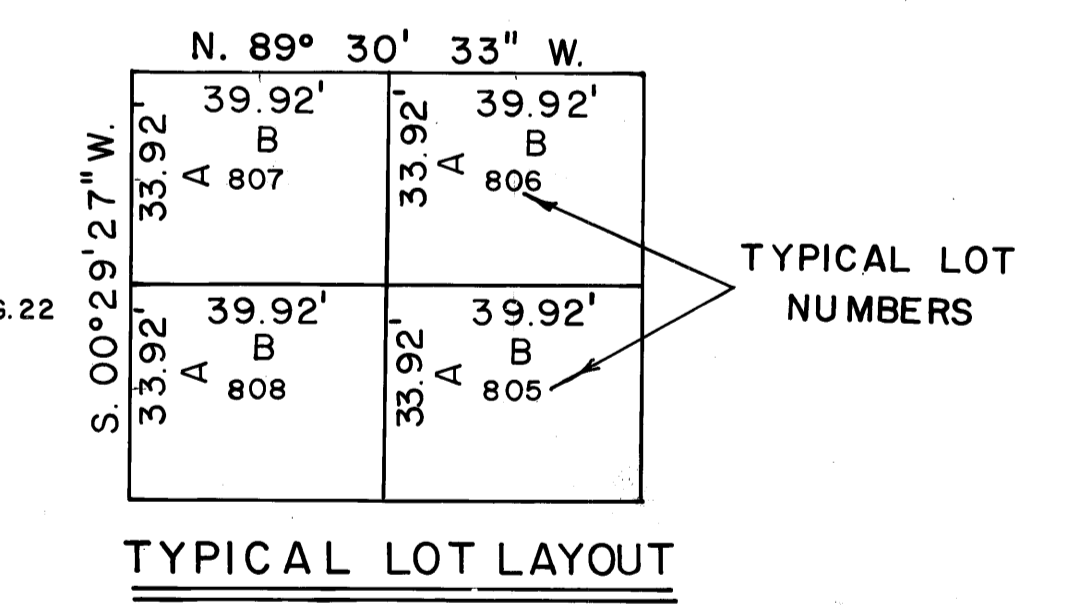
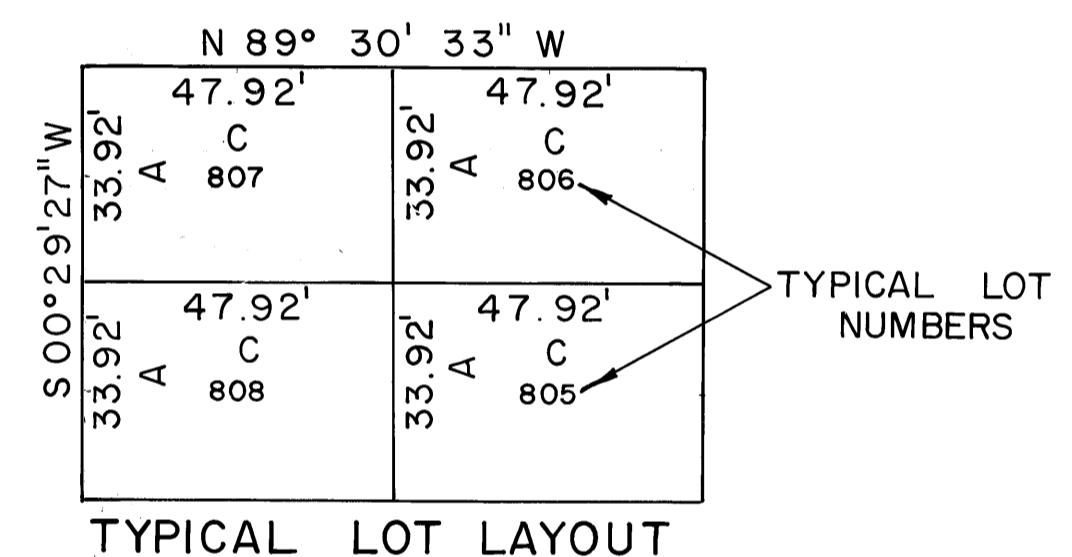
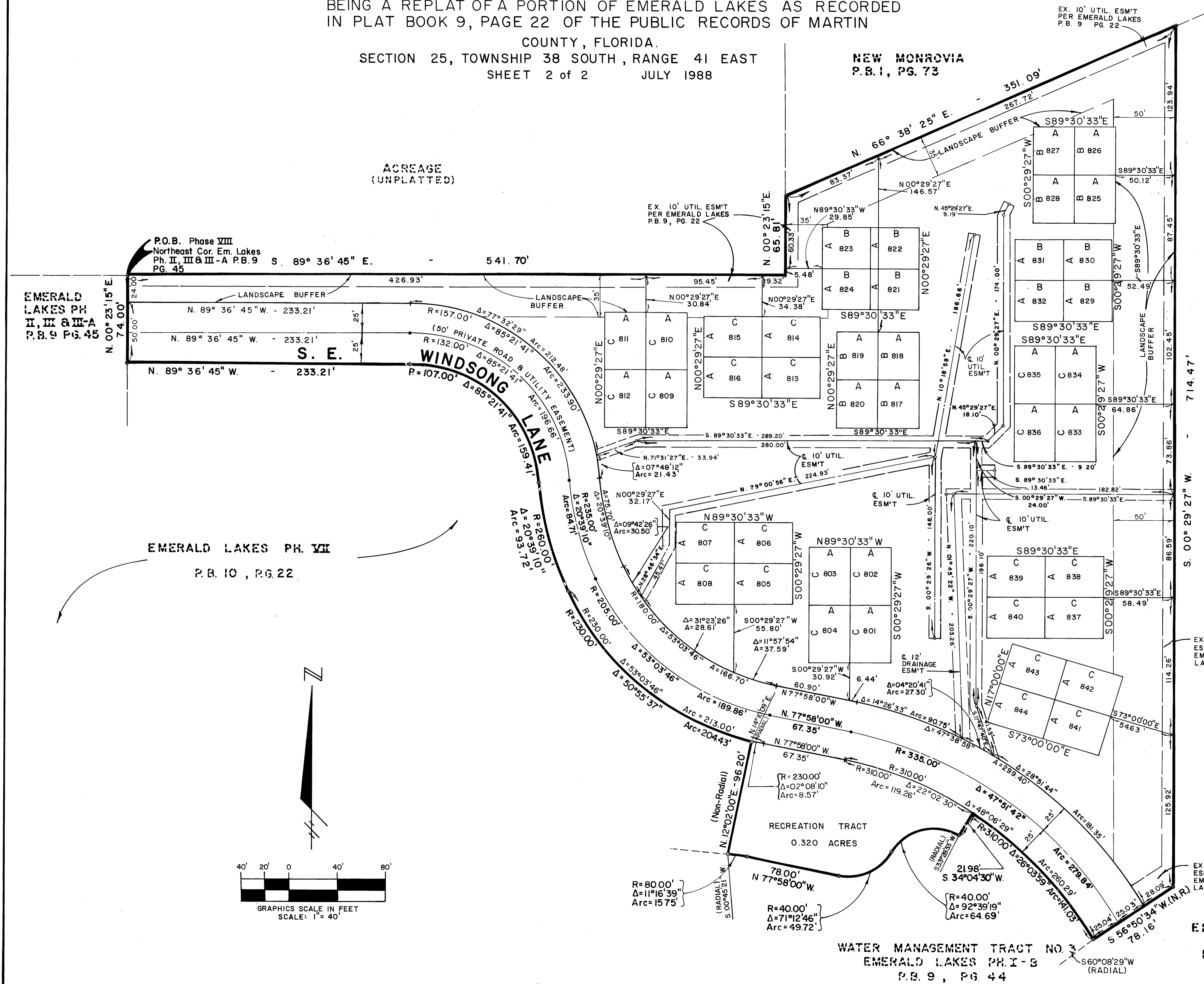
I, Marsha Stiller, Clerk of the Circuit Court of Martin County Florida, hereby certify that this plat was filed for record in Plat Book 11, Page 90, Martin County, Florida, Public Records this day of \_\_\_\_\_, 1988.

MARSHA STILLER, CLERK  
CIRCUIT COURT  
MARTIN COUNTY, FLORIDA

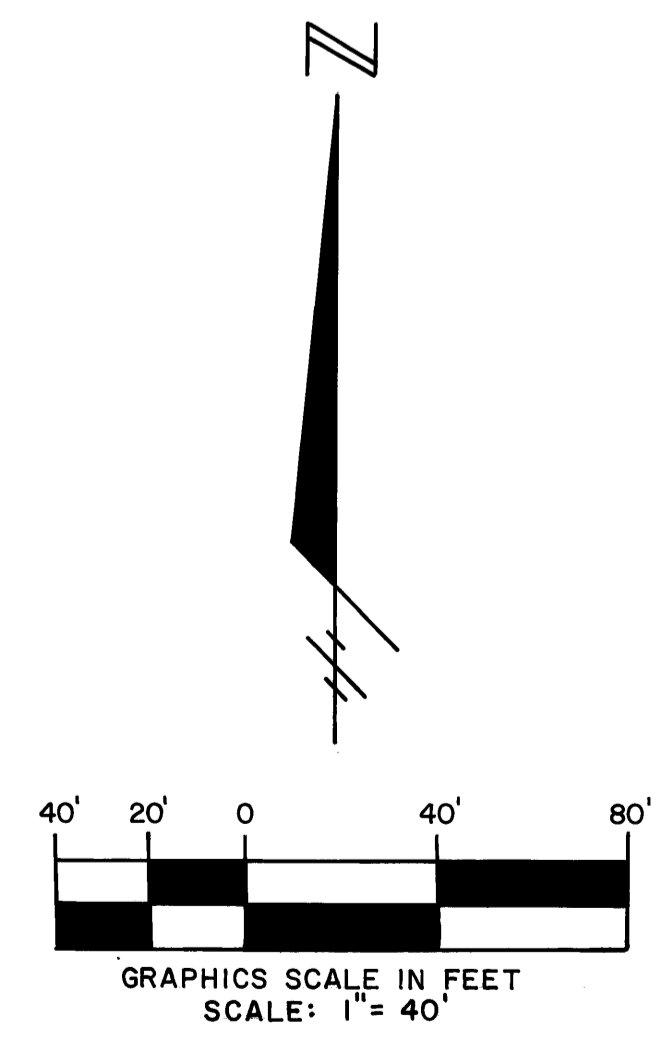
BY: \_\_\_\_\_  
Deputy Clerk

File No. \_\_\_\_\_

THIS INSTRUMENT PREPARED BY:  
PERRY C. WHITE P.L.S. 4213 STATE OF FLORIDA  
**LAWSON, NOBLE & ASSOCIATES, INC.**  
ENGINEERS - PLANNERS - SURVEYORS  
BOYNTON BEACH, FLORIDA



"A" denotes a distance of 33.92 feet  
"B" denotes a distance of 39.92 feet  
"C" denotes a distance of 47.92 feet



EMERALD LAKES  
PH. IX  
P.B. 10, PG. 14

WATER MANAGEMENT TRACT NO. 3  
EMERALD LAKES PH. I-B  
P.B. 9, PG. 44